



TERRANEA

PALOS VERDES, CA

TERRANEA.COM | #TERRANEA

TABLE OF *Contents*

3	RESORT OVERVIEW
8	MAP
9	RESORT LAYOUTS
17	SUSTAINABILITY
20	DINING
21	DESTINATION SERVICES
31	GOLF
33	WELLNESS

RESORT *Overview*

LOCATION

- Palos Verdes Peninsula, Los Angeles' only oceanfront resort
- 20 miles from Los Angeles International and Long Beach Airports

ACCOMMODATIONS

- 560-room resort
- 324 resort rooms (king & double doubles)
- Premier Suite with fireplace, 3 VIP Suites, and 28 Ocean View Suites
- 20 ocean view; one or two-bedroom Bungalows
- 50 ocean view; one, two, or three-bedroom Casitas
- 32 ocean view; two or three-bedroom Villas

MEETING & EVENT FACILITIES

- 60,000 square-feet of indoor meeting and event space
- 33 meeting rooms for social and business gatherings
- 18,000 square-foot Palos Verdes Grand Ballroom
- 6,600 square-foot Marineland Ballroom
- 11,000 square-foot ocean view ballroom foyer
- 4,400 square-foot Catalina Room with view of ocean and Catalina Island
- 15 convenient breakout rooms, many with ocean view terraces
- 4 boardrooms (2 with fireplaces)
- 1 large hospitality suite
- 75,000 square-feet of outdoor meeting space
- 16,000 square-foot oceanfront Palos Verdes Meadows
- 13,000 square-foot Palos Verdes Terrace and Lawn
- 7 additional oceanfront lawn spaces

RESORT ACTIVITIES

- Adventure concierge, pointe discovery, specializing in land, sea, and art adventures
- The Links at Terranea, an award-winning, 9-hole par-3 oceanfront golf course

- Four heated swimming pools including the Resort Pool with 140-foot waterslide and children's splash zone, Vista Pool, Spa Pool and adults-only cielo point Pool
- Kids Club
- marea, luxury boutique
- Secluded beach cove and nearly two miles of surrounding scenic bluff top trails
- Pointe Vicente Lighthouse located 1 mile walk from resort

DESTINATION SERVICES

- Terranea Resort features a full service in-house DMC department, providing support with transportation, entertainment, décor and activities, both on and off property

SPA & FITNESS

- 50,000 square-foot award-winning spa with 25 treatment rooms
- 5,000 square-foot Fitness & Wellness Center, with oceanfront Movement Studio
- 25,000 square feet of outdoor space, including lap pool, hot tubs and private cabanas
- Salon including manicure/pedicure, hair, and beauty services
- Retail boutique with custom spa products
- Locker rooms
- Indoor and outdoor relaxation areas

DINING

- mar'sel: oceanfront signature restaurant
- catalina kitchen: serving all-day fare and signature buffet offerings
- bashi: wok-dishes, social grilling, and sushi
- solviva: tranquil retreat with delicious and healthy fare
- Nelson's: coastal restaurant
- Lobby Bar and Lounge: scenic views, cocktails, and live entertainment nightly
- sea beans: café and pastry shop

Awards & ACCOLADES



NEWSWEEK READERS' CHOICE (2024)
Best Waterfront Hotel – Terranea Resort

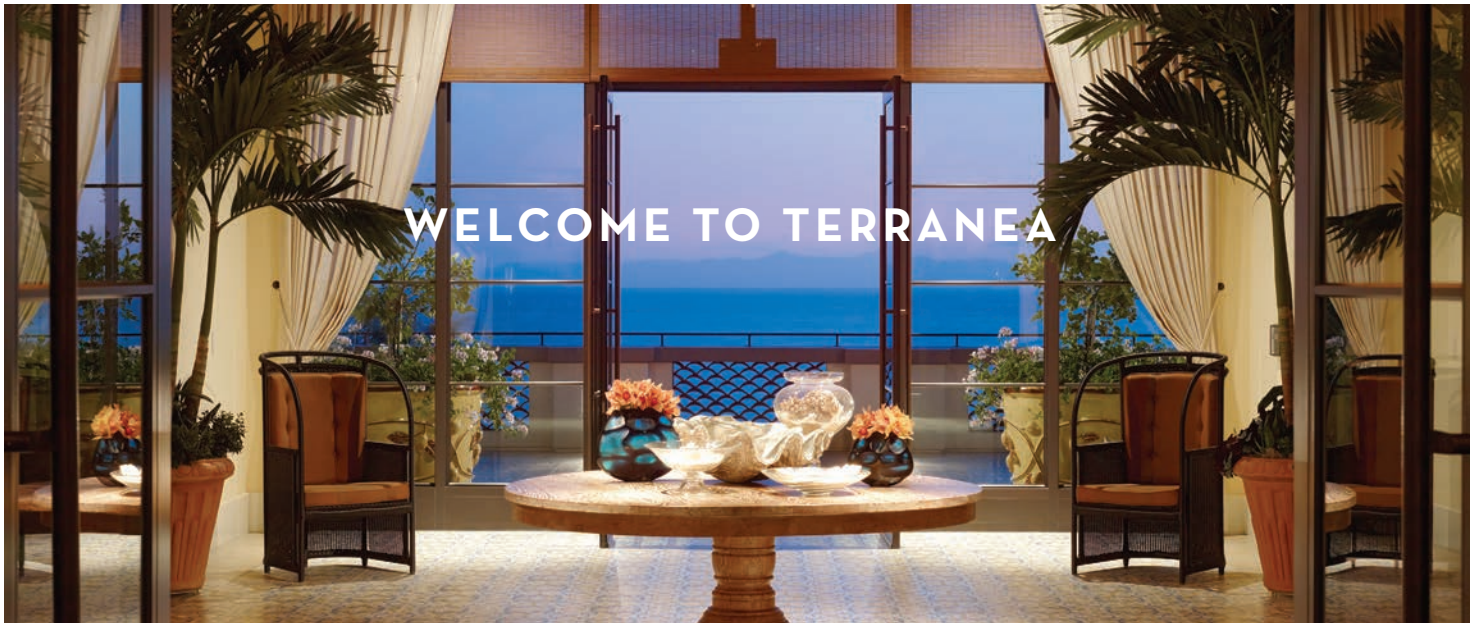
SOUTH BAY'S READERS' CHOICE AWARDS (2024)
"Best Resort" | "Best Hotel" | "Best Weekend Getaway"

"Favorite Brunch" | "Favorite Buffet" | "Favorite Massage"
"Favorite Day Spa" | "Favorite Banquet Facility"
"Favorite Fine Dining" | "Favorite Golf Course"
"Favorite Happy Hour" | "Favorite Live Entertainment"
"Favorite Ocean View Restaurant" | "Favorite Outdoor Dining"
"Favorite Outdoor Entertainment" | "Favorite Romantic Restaurant"

TRAVEL + LEISURE WORLD'S BEST AWARDS (2024)
One of the "15 Favorite Resorts in California" – Terranea Resort

WINE SPECTATOR
Best Award of Excellence – mar'sel

LOVELY LIST
Best Venue



Discovery



THE LINKS AT TERRANEA | The Links is a dramatic 9-hole par-3 oceanfront golf course, with stunning views of the Pacific Ocean and Catalina Island. Masterfully routed and beautifully integrated with its natural surroundings, the golf course offers a unique environment for both group and individual play. From corporate tournaments to wedding parties. Our PGA professional staff can customize your group outing and host up to 60 players at once. By incorporating traditional and non-traditional intra-tournament competitions into your event, your attendees will walk away with plenty of smiles and memories to last a lifetime. Guests can also enjoy challenging play at local 18-hole golf courses.



RESORT ACTIVITIES | Explore Terranea and embrace all that our surrounding ocean and rich habitat offer during your stay. Find your next adventure guided by our experienced team with our specially curated 'Aqua & Terra' adventures. Aqua - oceanside with stand-up paddle boarding, kayaking, tide pooling, or Terra - by exploring our stunning cliff top grounds and the local Palos Verdes Peninsula with a guided bike ride, an oceanfront hike, or a unique and intimate introduction to our falconry program. The daily mission of Terranea's Activity Leaders is to provide the most true to place and enjoyable experiences for all our guests and visitors. Whatever you choose to do we promise that you will leave with a local's connection to this special place.

Epicurean



FARM-TO-TERRANEA | The fruits of the earth not only nourish the body, but also the human spirit. In celebration of nature's gifts, Terranea passionately harvests ingredients from the resort gardens and buys from local growers to create exceptional Farm-to-Terranea dining experiences. The wealth of dining options offered to guests is perhaps the only thing that rivals the views from Terranea. Each of the resort's food and beverage outlets displays the same commitment to sustainability and responsible development that characterize the resort at large. Terranea Resort offers a variety of unique restaurants and fine dining experiences sure to please any palate.

Wellness



THE SPA AT TERRANEA | Overlooking the Pacific Ocean and the Palos Verdes coastline, The Spa at Terranea embraces the beauty and energy of its idyllic setting to create a transformative experience for mind, body and spirit. Designed by the foremost experts in wellness and restorative therapy, the 50,000-square-foot oceanfront Spa, Fitness and Wellness Center, and Salon invites you to immerse yourself in a variety of experiences that bring you back to center. Indulge in an array of spa treatments for body and face: some traditional, and others inspired by Terranea's unique coastal locale. Plunge into the outdoor pool, work out in the expansive gym or achieve balance with a restorative yoga class. The Spa's customized treatments and peaceful ambience encourage you to reconnect with nature and leave you feeling renewed.

Retail



MAREA BOUTIQUE | Terranea offers a luxuriant resort shopping experience at its Mediterranean influenced boutique, marea. Named for the Italian and Spanish words for tide, marea's unique and intimate retail space showcases high-end resort wear, adventure apparel and exclusive, one-of-a-kind jewelry and home goods for men, women and children.

LOCAL *Attractions*



LOS ANGELES INTERNATIONAL AIRPORT (LAX) - 17 MILES

LONG BEACH AIRPORT (LGB) - 24 MILES

JOHN WAYNE AIRPORT, ORANGE COUNTY (SNA) - 42 MILES

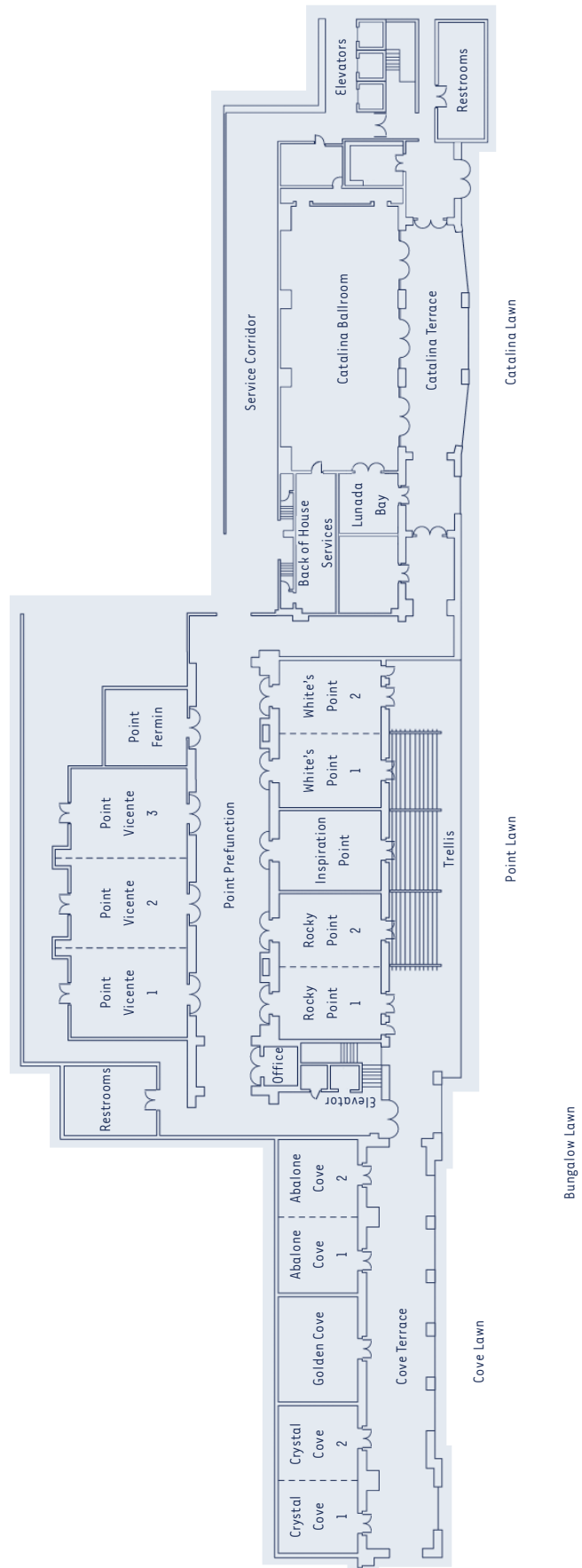


- 1 Villas
- 2 Casitas (West)
- 3 Casitas (East)
- 4 Main Building Guestrooms & Suites
- 5 Bungalows
- 6 Lobby, Lobby Bar & Terrace, 4th floor
- 7 Front Desk, 4th floor
- 8 Palos Verdes & Marmelard Ballrooms, 4th floor
- 9 Sea Salt Conservatory
- 10 Palos Verdes Terrace, 4th floor
- 11 Palos Verdes Meadows
- 12 Cove Terrace & Lawn, 2nd floor
- 13 Bungalow Lawn
- 14 Point Terrace & Lawn, 2nd floor
- 15 Ocean Lawn
- 16 Catalina Point
- 17 Catalina Ballroom, Terrace & Lawn, 2nd floor
- 18 Ocean View Terrace, 2nd floor
- 19 Vista Pool, 4th floor
- 20 The Links at Terranea & Golf House
- 21 Beach Cove
- 22 cielo point Pool
- 23 Resort Pool, 2nd floor
- 24 Kids Club, 2nd floor
- 25 The Spa at Terranea
- 26 Fitness Center & Movement Studio
- 27 solviva
- 28 Nelson's
- 29 sea beans, 4th floor
- 30 catalina kitchen, 2nd floor
- 31 bashii, 2nd floor
- 32 mar'sel
- 33 Discovery Trail Rest Area
- 34 pointe discovery, 4th floor
- 35 marea, 4th floor
- 36 Experience Center, 4th floor
- 37 Public Day Parking
- 38 Real Estate Office, 4th floor

2ND

FLOOR

MEETING ROOMS



MEETING ROOM CAPACITIES

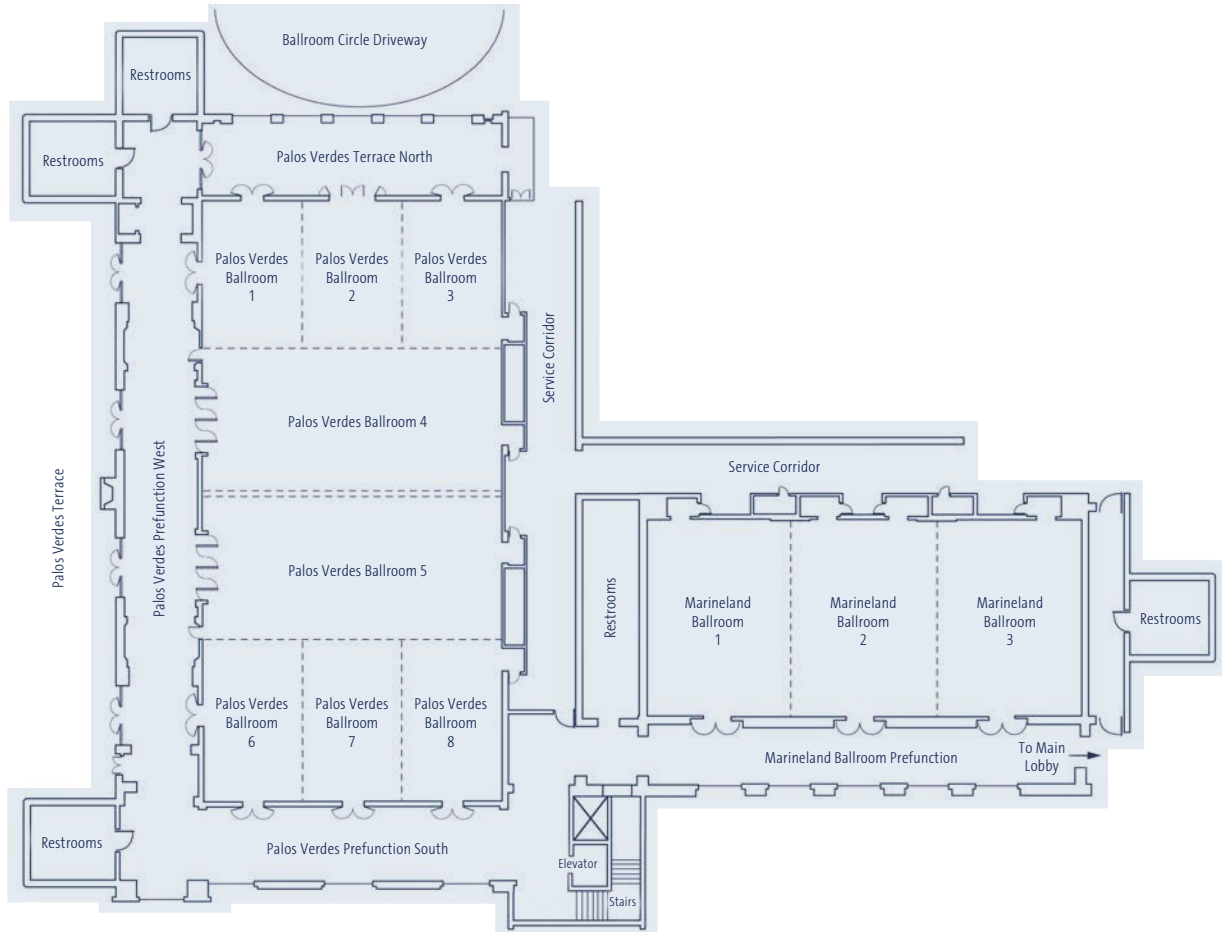
MEETING ROOMS	TOTAL SQ. FT.	ROOM SIZE	CEILING HEIGHT	CLASSROOM	THEATRE	BANQUET 10	RECEPTION	CONFERENCE	U-SHAPE	H-SQUARE	10X10'S
Abalone Cove	1,058	46'x23'	11'	50	120	70	111	28	30	36	-
Abalone Cove 1	529	23'x23'	11'	24	55	30	53	12	20	24	-
Abalone Cove 2	529	23'x23'	11'	24	55	30	53	12	20	24	-
Catalina Ballroom	4,410	98'x45'	16'	150	250	250	300	60	66	72	21
Crystal Cove	1,058	46'x23'	11'	50	120	70	111	28	30	36	-
Crystal Cove 1	529	23'x23'	11'	24	55	30	53	12	20	24	-
Crystal Cove 2	529	23'x23'	11'	24	55	30	53	12	20	24	-
Golden Cove	713	31'x23'	11'	30	40	40	74	16	20	24	-
Inspiration Point	690	30'x23'	11'	24	40	40	68	14	12	24	-
Lunada Bay	480	24'x20'	11'	15	30	30	45	16	9	12	-
Point Vicente	2,800	80'x35'	11'	120	200	180	190	48	56	60	14
Point Vicente 1	910	35'x26'	11'	40	100	60	90	18	20	24	-
Point Vicente 2	910	35'x26'	11'	40	100	60	90	18	20	24	-
Point Vicente 3	910	35'x26'	11'	40	100	60	90	18	20	24	-
Point Fermin	575	25'x23'	11'	21	44	30	58	14	15	14	-
Point Prefunction	3,146	143'x22'	12'	-	-	-	400	-	-	-	-
Rocky Point	1,320	44'x30'	11'	60	100	80	137	34	36	40	-
Rocky Point 1	660	30'x22'	11'	30	50	40	68	22	18	24	-
Rocky Point 2	660	30'x22'	11'	30	50	40	68	22	18	24	-
White's Point	1,320	44'x30'	11'	60	100	80	137	34	36	40	-
White's Point 1	660	30'x22'	11'	30	50	40	68	22	18	24	-
White's Point 2	660	30'x22'	11'	30	50	40	68	22	18	24	-

OUTSIDE SPACES	TOTAL SQ. FT.	CEILING HEIGHT	THEATRE	BANQUET 10	RECEPTION
Bungalow Lawn	800	-	100	60	100
Catalina Lawn & Terrace	10,655	-	-	350	600
Catalina Point	1,973	-	230	-	-
Cielo Pointe North Lawn	3,150	-	160	100	140
Cove Lawn & Terrace	6,825	10.5'	-	350	500
Golf Lawn	8,450	-	200	140	200
Ocean Lawn	2,400	-	400	-	250
Ocean View Terrace	1,480	-	100	60	100
Palos Verdes Meadows	22,523	-	1200	900	1200
Palos Verdes Terrace	13,649	-	-	460	600
Point Lawn & Terrace	7,000	-	-	240	400

4TH

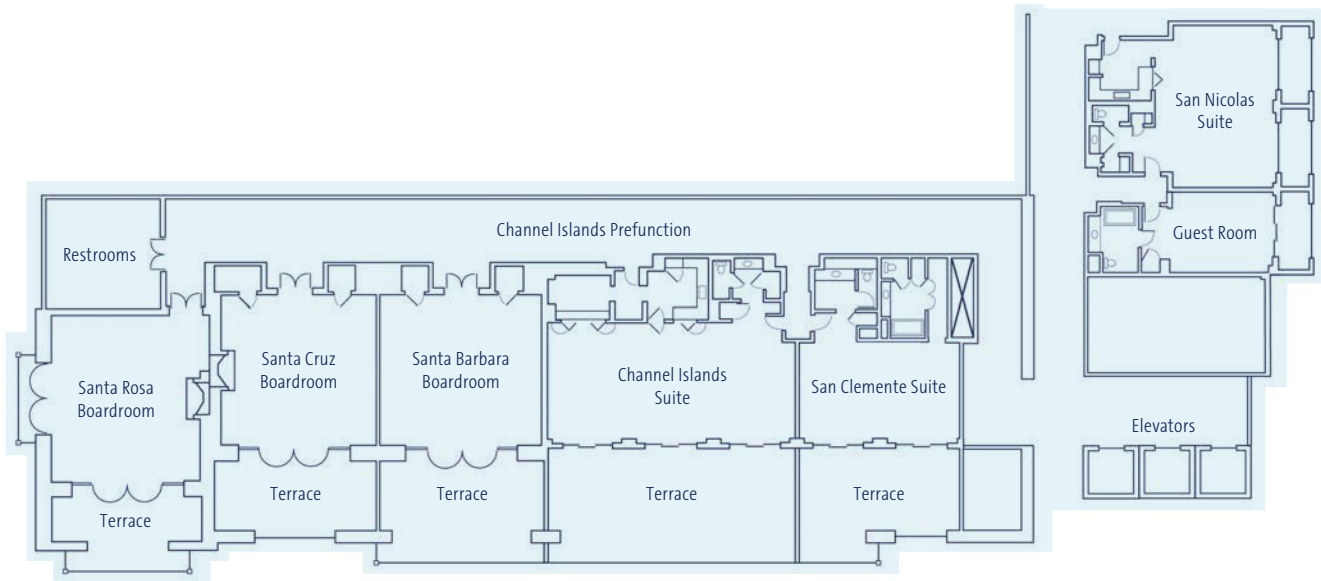
FLOOR

BALLROOMS



BALLROOM CAPACITIES

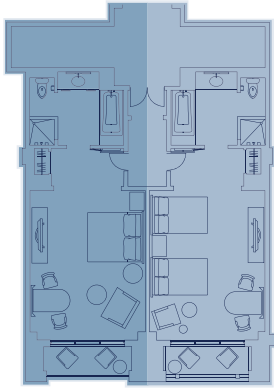
BALLROOMS	TOTAL SQ. FT.	ROOM SIZE	CEILING HEIGHT	CLASSROOM	THEATRE	BANQUET 10	RECEPTION	CONFERENCE	U-SHAPE	H-SQUARE	10X10'S
Grand Ballroom	18,048	188'x96'	23.5'	1,100	2,000	1,200	2,400	-	-	-	90
Palos Verdes Ballroom 1	1,504	47'x32'	23.5'	80	140	100	158	34	40	40	7
Palos Verdes Ballroom 12	3,008	64'x47'	23.5'	160	300	200	200	68	80	100	15
Palos Verdes Ballroom 123	4,512	96'x47'	23.5'	258	450	300	300	90	120	140	21
Palos Verdes Ballroom 2	1,504	47'x32'	23.5'	80	140	100	158	34	40	40	7
Palos Verdes Ballroom 23	3,008	64'x47'	23.5'	160	300	200	200	-	-	-	15
Palos Verdes Ballroom 3	1,504	47'x32'	23.5'	80	140	100	158	34	40	40	7
Palos Verdes Ballroom 4	4,512	96'x47'	23.5'	258	450	300	300	-	-	-	21
Palos Verdes Ballroom 5	4,512	96'x47'	23.5'	258	450	300	300	-	-	-	21
Palos Verdes Ballroom 45	9,024	96'x94'	23.5'	516	900	560	600	-	-	-	42
Palos Verdes Ballroom 6	1,504	47'x32'	23.5'	80	140	100	158	34	40	40	7
Palos Verdes Ballroom 67	3,008	64'x47'	23.5'	160	300	200	200	-	-	-	15
Palos Verdes Ballroom 678	4,512	96'x47'	23.5'	258	450	300	300	-	-	-	21
Palos Verdes Ballroom 7	1,504	47'x32'	23.5'	80	140	100	158	34	40	40	7
Palos Verdes Ballroom 78	3,008	64'x47'	23.5'	160	300	200	200	-	-	-	15
Palos Verdes Ballroom 8	1,504	47'x32'	23.5'	80	140	100	158	34	40	40	7
Palos Verdes Terrace North	2,304	96'x24'	13.5'	-	-	-	242	-	-	-	-
Palos Verdes Prefunction West	4,584	191'x24'	14'	-	-	-	700	-	-	-	-
Palos Verdes Prefunction South	2,256	94'x24'	12.5'	-	-	-	400	-	-	-	-
Marineland Ballroom	6,608	112'x59'	18'	324	711	420	640	-	-	-	32
Marineland Ballroom 1	2,183	59'x37'	18'	96	200	140	221	40	45	51	10
Marineland Ballroom 2	2,183	59'x37'	18'	96	200	140	221	40	45	51	10
Marineland Ballroom 3	2,183	59'x37'	18'	96	200	140	221	40	45	51	10
Marineland Ballroom Prefunction	2,944	128'x23'	12.5'	-	-	-	400	-	-	-	-

BOARDROOMS
& HOSPITALITY

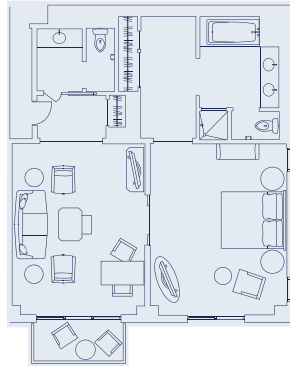
BOARDROOMS	TOTAL SQ. FT.	ROOM SIZE	CEILING HEIGHT	RECEPTION	CONFERENCE	SQUARES OF 8
Santa Rosa Boardroom	780	30'x26'	11	50	14	40
Santa Cruz Boardroom	729	27'x27'	11	40	14	32
Santa Barbara Boardroom	728	28'x26'	11	40	14	32
Channel Islands Suite	1,300	44'x30'	11	70	8	-
San Clemente Suite	810	30'x27'	11	30	16	-
San Nicolas Suite	825	33'x25'	11	40	-	-

Accommodations

GUEST ROOMS, SUITES, BUNGALOWS, VILLAS & CASITAS



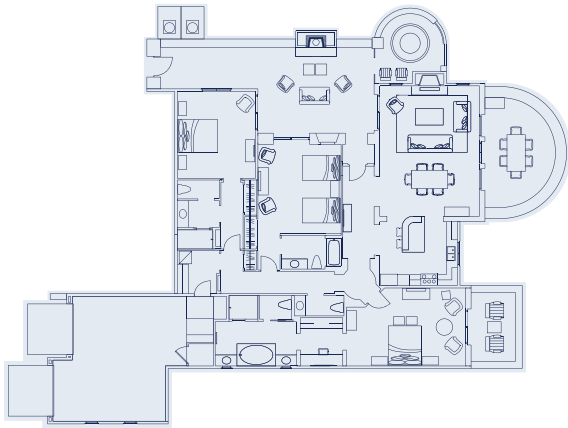
**KING/DOUBLE
GUEST ROOMS**
450 sq. ft.



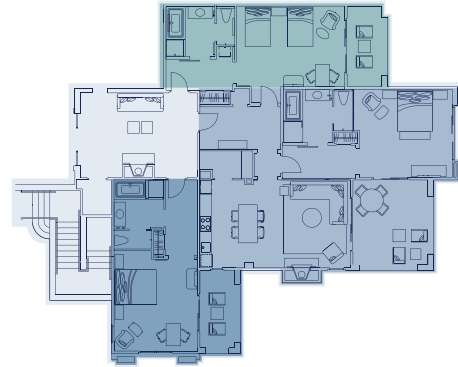
OCEAN SUITE
900 sq. ft.



VANDERLIP SUITE
2,200 sq. ft.



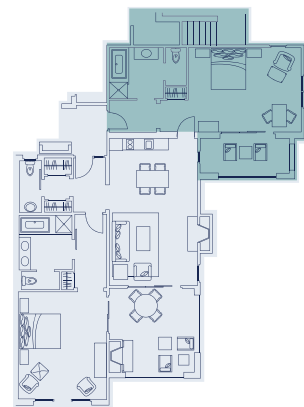
VILLAS
1,864-2,808 sq. ft.



CASITA
500-2,040 sq. ft.



SHEARWATER SUITE
1,800 sq. ft.



BUNGALOW
600-1,660 sq. ft.

Accommodations



GUESTROOMS

Relax and feel the close connection to the ocean and natural surroundings at our California coastal resort. Conveniently located in the lobby building with easy access to the pools, dining, and meeting spaces.

SUITES

Experience breathtaking views from your spacious suite, overlooking the lush resort grounds or pools with views of the Pacific Ocean. Conveniently located in the lobby building with easy access to the pools, dining, and meeting spaces.



BUNGALOWS

Located near the ocean's edge and just steps away from the award-winning oceanfront spa and café, The Bungalows at Terranea provide the perfect getaway in Southern California.

CASITAS

Experience breathtaking views from your spacious suite, overlooking the lush resort grounds or pools with views of the Pacific Ocean. Conveniently located in the lobby building with easy access to the pools, dining, and meeting spaces.



THE VILLAS AT TERRANEA RESORT

Located in a secluded enclave overlooking the Links at Terranea golf course, with panoramic views of Catalina Island and the Pacific Ocean, our private California Villa residences blend exclusivity with the world-class amenities that Terranea is known for.

Pools & CABANAS



THE MAIN RESORT POOL

This family oasis has everything parents and kids could ask for, complete with a 140-foot water slide, splash pad, private cabanas, and poolside games.

CIELO POINT POOL

This chic oceanfront retreat offers an adult-only atmosphere, sparkling pool with private cabanas, and stunning views of Catalina Island.



THE SPA POOL

Designed with relaxation in mind, this serene setting is reserved for spa guests and features spectacular ocean views, private cabanas, fire pits, and a 25-meter pool.



VISTA POOL

For resort guests ages 13 and older, the saltwater pool and hot tub offer stunning views of the Pacific Ocean.



SUSTAINABILITY *initiatives*

LESS WASTE

Multi-use bath amenity dispensers, such as shampoo and body wash, are installed in our Bungalows, Casitas, and Villas - all guestrooms on property will receive these eco-friendly and waste-minimizing initiative by the end of the year.

97/100

OCEAN WATER QUALITY SCORE

with help from our Contech Stormwater Treatment system.

13 ACRES

of restored kelp forest in 2 coves.

RESPONSIBLE SOURCING

We proudly partner with Santa Monica Seafood, a family owned business and member of the Global Sustainable Seafood Initiative, National Fisheries Institute, and more.

10.2 TONS+

OF SURPLUS FOOD DONATED TO CHEFS TO END HUNGER

TERRANEA WAS

1 OUT OF 10

HOTELS CHOSEN FOR A FOOD WASTE PILOT WITH AHLA, THE ROCKEFELLER FOUNDATION & THE WWF.

All carry-out containers are made from **COMPOSTABLE, BIODEGRADABLE, OR POST-CONSUMER RECYCLED MATERIALS.**

THE SEA SALT CONSERVATORY

serves as a natural evaporation greenhouse resulting in high quality sea salt.



HIGH-EFFICIENCY

toilets and faucets with aerators reduce the amount of water consumption.



NO LAND WAS REMOVED

from the area during development. Instead, existing structural and raw materials were recycled in site preparations.

OUR CULINARY TEAMS EMPLOY THE F.L.O.S.S. METHOD.

FRESH LOCAL ORGANIC SEASONAL SUSTAINABLE

ALL PLASTIC STRAWS WERE REPLACED BY **COMPOSTABLE STRAWS**

\$500,000+

SPENT ON LED ENERGY EFFICIENT BULBS SINCE 2015

Sensor control lighting fixtures are installed in public restrooms and closets.



45 MATURE TREES

legacies of Marineland dating back 50 years, were carefully boxed and preserved during construction and replanted as a tribute to the area's history.



14 ACRES

Naturalist led tours guide visitors along the resort's extensive walking and hiking trails along 14 acres of restored native habitat.



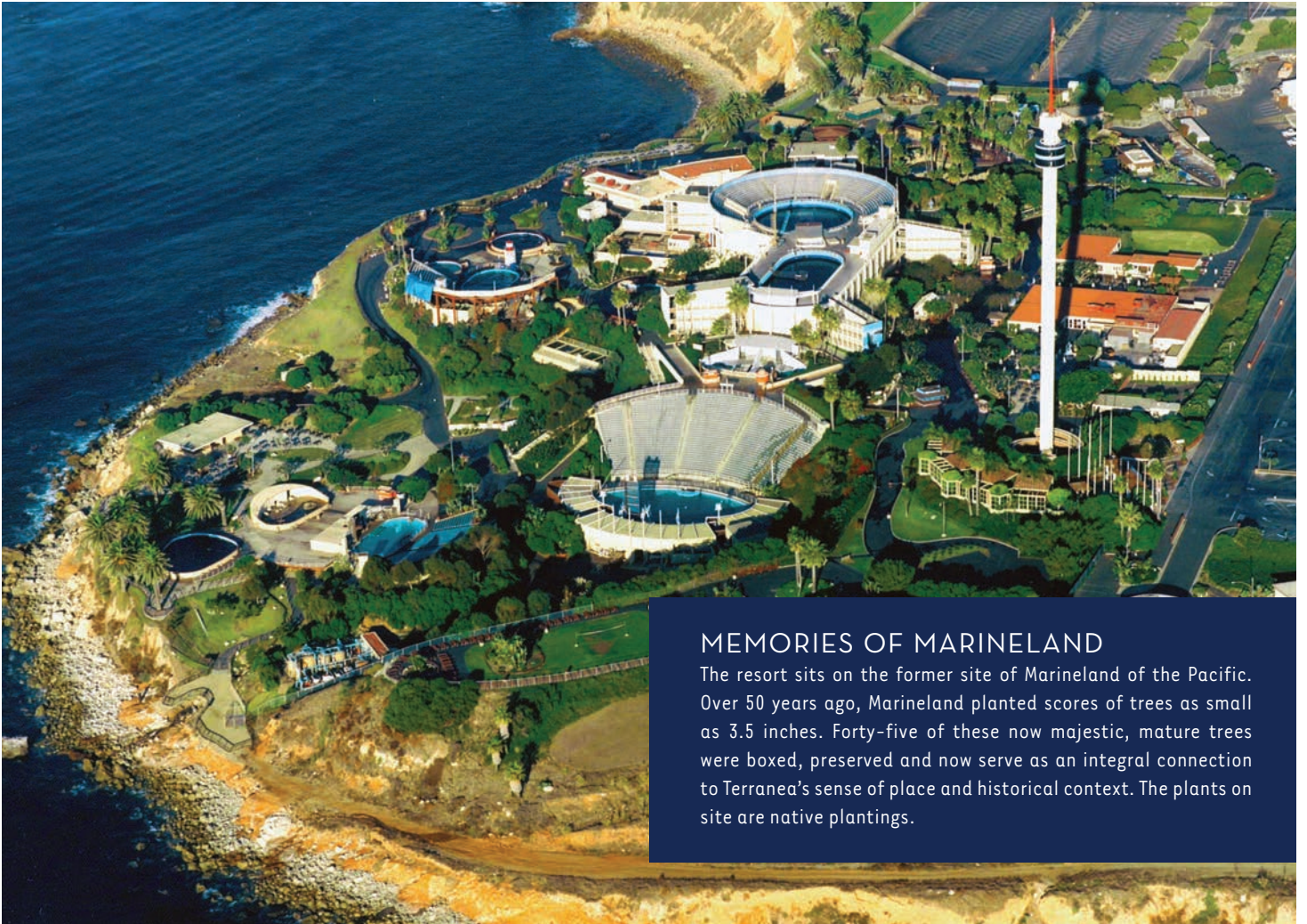
Flowater machines installed around the resort for single use H₂O bottles saved from the landfill.



Recycling in both front and back of the house.

- ALUMINUM
- PLASTIC
- GLASS
- CARDBOARD
- PAPER

FUN facts



MEMORIES OF MARINELAND

The resort sits on the former site of Marineland of the Pacific. Over 50 years ago, Marineland planted scores of trees as small as 3.5 inches. Forty-five of these now majestic, mature trees were boxed, preserved and now serve as an integral connection to Terranea’s sense of place and historical context. The plants on site are native plantings.

YOUR FEET ARE PLANTED ON AN ANCIENT ISLAND

The Palos Verdes Peninsula was once part of the Channel Islands, a sister to the island you see to the west, Catalina Island.

NO LAND WAS HARMED IN THE MAKING OF THIS RESORT

No land was removed from the area during the development. The land of Terranea and the majority of the materials from the pre-existing, abandoned structures were recycled and used in the site preparation of the new resort.

LOCAL ART IS ALWAYS ON DISPLAY

Hallways and public spaces feature the majestic artistry of local artisans.

SUN RISE AND SET OVER THE OCEAN FROM A SINGLE VANTAGE POINT

The Resort’s dramatic setting with its south facing, panoramic 270-degree views of the Pacific, makes this one of the rare places where one can see the sun both rise and set over the ocean from a single vantage point. This can occur during the months of December and January when the sun is at its most southern location in the sky.

WHALES, WHALES, WHALES

The annual whale migration takes place right off the coast of Terranea and the official count is conducted at the nearby Interpretive Center. Terranea guests can participate in the whale count through the Volunteer Program.

THE SHIRT OFF OUR BACK

Employee uniforms are made from eco-friendly fabrics to minimize dry-cleaning. One material chosen is made from recycled water bottles and has a tremendously soft feel.

NELSON'S PAYS TRIBUTE

Nelson's restaurant and bar overlooks the coves made famous almost 50 years ago by the hit television series *Sea Hunt*, which featured Lloyd Bridges as the lead character Mike Nelson. Nelson's pays tribute to Lloyd Bridges' lifetime efforts to protect the environment and ocean with furnishings all made of recycled materials including a centerpiece bar countertop made completely from recycled wine bottles.



TERRANEA ON THE SILVER SCREEN

A favorite Hollywood film site featured in films such as *Pirates of the Caribbean*, *Batman*, *Entourage*, *American Idol*, *Charlie's Angels*, *Fun with Dick and Jane*, *Aviator* and *Pearl Harbor*. *This is 40* and *The Savages* starring John Travolta and Salma Hayek.

THE LINKS AT TERRANEA

The Links at Terranea is a 9-hole par 3 course – unique in itself in Southern California. But golfers will also get a sense of place as the tee box on each hole faces a noted Palos Verdes area landmark.



HELPING NATURE IS ALWAYS IN VIEW

Three telescopes along the scenic bluffs allow guests to enjoy the views of nature, while at the same time using the experience as a “teachable moment.” The telescopes are dedicated to environmental non-profit organizations to further their exemplary work via these informational efforts and donations.

IN TUNE WITH YOUR BODY

Spa treatments and fitness classes correspond to the body's natural bio-rhythms. In the morning, treatments and programs energize and invigorate. In the afternoon, treatments are calming and restorative.



OCEANFRONT Dining

Fresh air and culinary delights go hand in hand with Terranea's variety of dining options. With scenic views of the Pacific and al fresco experiences, our restaurants provide an experience that is refined and enjoyable.

Terranea's culinary team celebrates the natural surroundings of the resort by using locally sourced products from the ocean, resort gardens and the surrounding peninsula.



mar'sel

Set overlooking the Pacific Ocean with stunning views, mar'sel offers the ideal location for an elegant dinner or seasonal Sunday brunch.

catalina KITCHEN

Set against the scenic views of Terranea Resort, Catalina Island and the Pacific Coast, catalina kitchen hosts a spirited dining experience in a vibrant and modern setting.

bashi

Enjoy inventive 'wok'-style dishes inspired by classic Chinese, Japanese, and Southeast Asian recipes, weaving simple, fresh ingredients into flavorful creations.



A guest favorite for casual dining, Nelson's is perched directly above the ocean coves made famous by the 1950s television series Sea Hunt – from which this modern surf shack takes its name.



sea beans artisan café serves as a casual and delicious meeting space, conveniently located at the main Lobby courtyard.



Designed for intimate occasions by the fireplace or convivial gatherings, The Lobby Bar & Terrace presents two distinct settings, each with far-reaching views of the Pacific Ocean.

Destination Services

DÉCOR | ENTERTAINMENT | ACTIVITIES | EVENT SERVICES

TERRANEADS@TERRANEA.COM



WHAT IS DESTINATION SERVICES?

We are Terranea's In-House Destination Services Department, offering unparalleled knowledge about the property, 24/7 access to its event spaces, and exclusive partnerships with our preferred vendors.



DÉCOR & ENTERTAINMENT

Enhance your program with exquisitely tailored décor to elevate your group's experience.



ACTIVITIES

Engage in exclusive group activities, both on-site and off-site, ranging from serene relaxation to thrilling adventures.



EVENT SERVICES

Comprehensive event services to help you deliver your business goals with style.



Decor

Designed Just For You

From linens and centerpieces to custom fabrications, our seasoned team of event designers is dedicated to bringing your vision to life. Whether it's networking lunches or awards dinners, we can offer extensive design expertise and insider knowledge to maximize your budget. With access to a diverse range of suppliers, we handle every aspect of design and delivery, ensuring a seamless and unforgettable event crafted with precision and creativity.

SERVICES INCLUDE *(but are not limited to):*

TABLE DÉCOR: Rental linens, chargers, napkin rings and placemats, meticulously selected to complement your event theme and style.

CENTERPIECES: From florals to ice sculptures, we can provide stunning centerpieces that serve as captivating focal points.

FURNITURE: Soft seating lounges, cocktail tables, and firepit hangouts ensure comfort and style for guests throughout your event.

DANCE FLOORS: Create the perfect atmosphere for celebration with our customizable dance floors available in various sizes and designs to suit your preference and venue space.



WHAT OUR CLIENTS HAVE TO SAY:

"I have to take a second again to thank the DS team. You guys are ABSOLUTELY AMAZING! Like seriously! I have not experienced a team like yours.

You guys are organized and prepared, super responsive and just jump in where needed. Everything was beautiful and our attendees had a great time with the experiential elements.

You guys totally made us look like rock stars. THANK YOU SO MUCH!!!! It was so wonderful to work with you guys!"



FURNITURE RENTALS



DECOR

LINENS AND CENTERPIECES



'CALIFORNIA COASTAL' DECOR



ELEGANT DINNER DECOR



Entertainment & Activations

Creating Unforgettable Experiences

Delight guests with our specialty entertainment options. With a diverse portfolio of talent at our fingertips, including DJs, captivating live acts and interactive activations, we specialize in bringing your event to life. Let us bring the magic to your occasion, creating moments that resonate and leave a lasting impression.

OFFERINGS INCLUDE *(but are not limited to):*

- | | |
|--|-------------------------------|
| Arcade and Virtual Reality Games | Live Bands |
| Caricature Artists | Solo Musicians |
| Casino Games | Live Graffiti Artists |
| DJs | Live Ice Sculpting |
| Dueling Pianos | Magicians and Illusionists |
| Falconry | Mentalists and Mind Readers |
| Food & Beverage Activations including candy buffets, popcorn carts, liquid nitrogen cocktails and branded drinks toppers | Motivational Speakers |
| Lawn Games | Murder Mystery Dinner Parties |
| Leather branding station | Permanent Jewelry |
| Live Band Karaoke | Photo Booths & Photo Busses |
| | Professional DJs |
| | Silent Discos |
| | Synchronized Swimmers |
| | Vinyl Spin Art |



As Terranea's premier in-house Destination Management Company, we pride ourselves on our exclusive partnerships with some of Los Angeles' most coveted entertainment providers.

With these exclusive relationships cultivated over time, we guarantee a seamless experience for your event, tailored precisely to your needs. By working with these providers repeatedly, we ensure the perfect fit for your event, delivering unparalleled entertainment experiences time and time again. | 25



ACOUSTIC GUITARIST



ENTERTAINMENT & ACTIVATIONS

SYNCHRONIZED SWIMMERS



SPECIALIST COFFEE BAR



ICE SCULPTURE



CUSTOM CHAMPAGNE WALL



FALCONRY



Activities

Making the Most of Your Time Outside the Boardroom

We specialize in delivering personalized group activities and excursions to refresh and recharge guests during your program. We take into account the individual goals of each group and pride ourselves on creating a bespoke itinerary that reflects the essence of both Terranea and the surrounding area. Let us transform your stay into a curated journey, blending the luxury of our resort with the diverse and captivating offerings of Southern California. From Ocean Sports and Archery at our Beach Cove to Resin-Board Workshops and Plein Air Painting on our surrounding terraces and lawns, Terranea has so much to offer you may not want to leave. For those looking to explore further afield ask us about our curated list of off-property excursions!

ACTIVITIES INCLUDE (but are not limited to):

SIGNATURE ON PROPERTY ACTIVITIES:

Ocean Kayaking, Stand-Up-Paddle Boarding, Snorkeling, Archery, Falconry, Guided Coastal Hikes, Tide Pooling, Coastal Resin Board Workshops, Plein Air Painting, Electric Bike Tours, Wine Tastings, Goat Yoga, Puppy Yoga, Candle Making and Stargazing.

TEAM BUILDING ACTIVITIES: The Amazing Race, Scavenger Hunts, Lawn Olympics, Shipwrecked



WHAT OUR CLIENTS HAVE TO SAY:

"I am thrilled to share that the trip was a resounding success and wouldn't have been possible without your exceptional efforts. The kayaking adventure on July 4th was an absolute blast, and the enthusiastic feedback from the participants speaks volumes."

Challenges, Drum Circles, Game Shows, Guac & Salsa competitions, Cake Wars and more!

CORPORATE SOCIAL RESPONSIBILITY: Bikes & Bears, 'Putt Putt Pantry' Mini Golf Give Back, Lego Superheroes and hygiene kit building events all lead by our talented team of facilitators.

OFF-PROPERTY ACTIVITIES: Harbour Cruises, Whale Watching Charters, Surfing Lessons, Horseback Riding and more.



GUIDED OCEAN KAYAKING



ACTIVITIES

COASTAL RESIN BOARD WORKSHOP



TEAM BUILDING ACTIVITIES



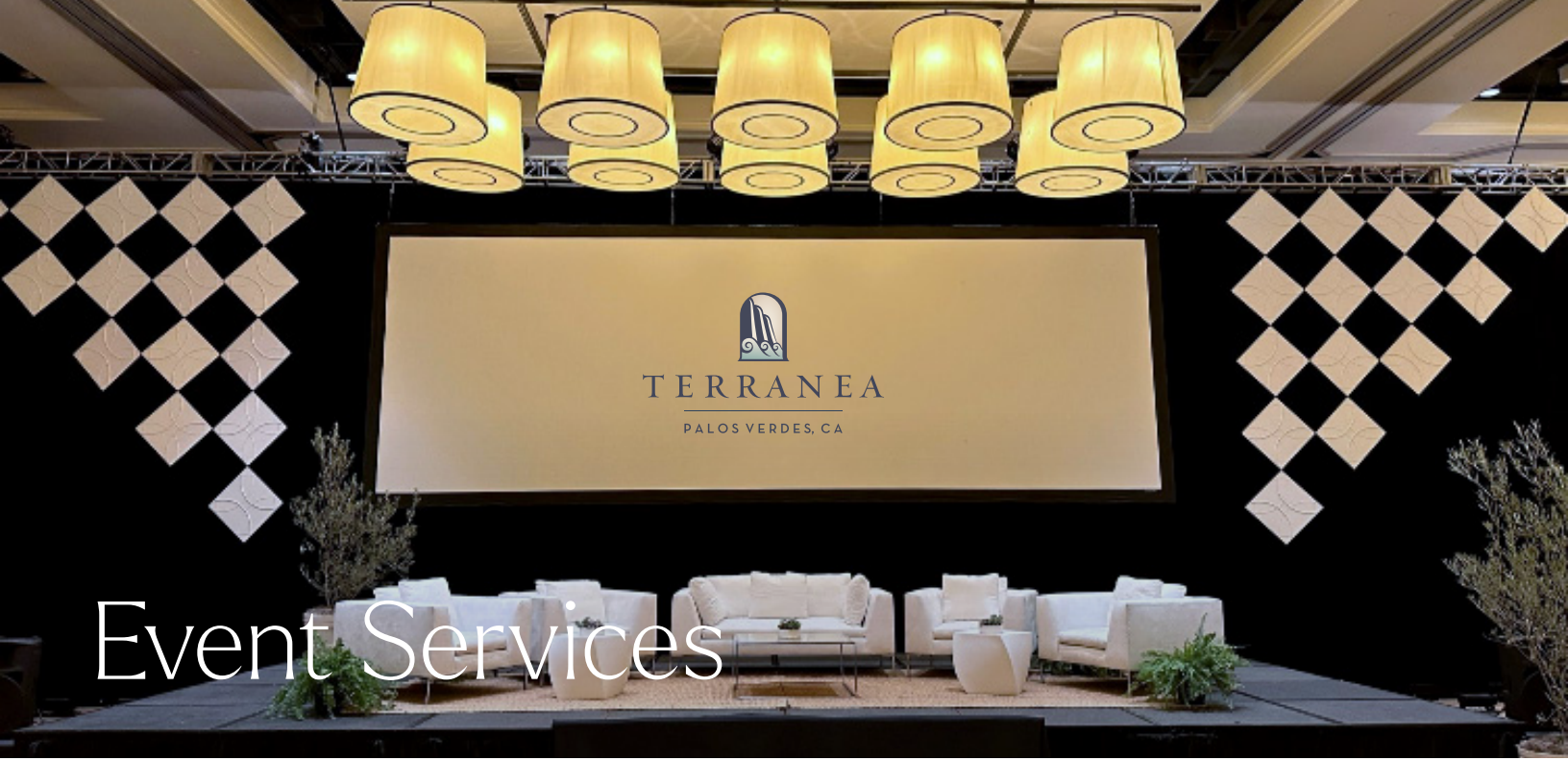
HORSEBACK RIDING



GOAT YOGA



WINE TASTING



Event Services

Ensuring a Smooth Running Program That Delivers on Your Business Goals

From session furniture to stage design, organizing a successful conference involves countless essential services. Let our dedicated in-house team handle all the details, freeing you to focus on everything else.

SERVICES INCLUDE *(but are not limited to):*

Private Transportation including airport arrivals and departures through our preferred Travel Partner

General Session Furniture

Branding

Tenting

Stage Design

Photographers & Videographers

MCs & Keynote Speakers

Custom Fabrication including branded photo ops

Hospitality Suite Rentals

Hair & Make Up Artists

Registration Booths

Live Plant Rentals





BRANDED WALL CLINGS



DECOR

SESSION FURNITURE



BRANDING STEP AND REPEAT



TENT ON CATALINA LAWN



The Links at Terranea provides the perfect backdrop for your next corporate event or fundraiser. The Links is a collection of 9 championship-caliber par-3 holes, masterfully integrated with each other and the scenic, natural surroundings of the Palos Verdes Peninsula. With its dramatic ocean views and award-winning design, there is no better place to host your next tournament or play your next round of golf.



TEE TIME PACKAGE

A traditional way to play golf, if time permits. Tee times can be arranged so that your group members are teeing off consecutively.

Base Tournament Package Includes:

Walking Cart, Personal Event Coordination with a PGA Professional Registration Table, and Personalized Logoed Scorecards.

Min: 2 participants | **Max:** 100 participants | Average **2 hours** per round

SHOTGUN PACKAGE

The shotgun package is perfect for groups that want the course to themselves. This package requires a 30 player minimum guarantee.

Base Tournament Package Includes:

Walking Cart, Personal Event Coordination with a PGA Professional Registration Table, and Personalized Logoed Scorecards.

Min: 30 participants | **Max:** 65 participants

THE LINKS GOLF ACADEMY

The Links' Golf Academy at Terranea Resort offers instruction with on-site PGA professionals that focuses on the short game, full swing, and playing strategies, with a teaching philosophy that revolves around the fundamentals of the game. The Golf Academy offers access to some of the best instruction and best training equipment available, giving guests a chance to practice like a pro, along with the backdrop of the golf resort's stunning oceanfront setting.

Visit terranea.com/golf for more information.

EVENT ENHANCEMENTS

- Rental Clubs
- Virtual Simulator Contests
- Putting Contests
- Closest to the Pin Contests
- Gift Cards
- Retail/Merchandise Prizes

Ask about our Catering and Food & Beverage options. Available for all golf packages.

GOLF *Activities*



LINKS AFTER DARK

Our signature golf offering, guests will enjoy a glow in the dark wonderland with a variety of package options to fit specific group size and budget. Glow Evenings are the perfect addition to a cocktail reception on our Golf Lawn Space. This package is perfect for groups that are looking to enjoy the extensive views of the property at night.



GOLF LOUNGE

The Links at Terranea has three full-swing golf studios equipped with state of the art golf simulators. Whether you want access for casual practice in between work sessions, a unique cocktail space, or to engage in a full on virtual tournament at Pebble Beach, we can tailor make a package for you.



INSTRUCTIONAL CLINICS

A very fun, informative, hands on experience, our instructional clinics are structured for all levels of players with topics including short game fundamentals and full swing basics! Guests will interact with our PGA Professional staff and enjoy learning about all areas of the game with the gorgeous Pacific Ocean as their backdrop.

Program Length: 1½ hours

Min: 4 participants | **Max:** 16 participants



OCEAN VIEW PUTTING COURSES

A very popular option that utilizes our 15,000 sq. feet of practice putting space providing a gorgeous view of the pacific. Each course is custom built and complete with real sand bunkers, bank boards and trees. Guests have the option to “free play” the course and enjoy music and drinks or have contests arranged with prizes. All equipment, balls and facilitation of activity included in your custom package. Sure to be a hit ask about adding cocktail service or food and beverage to your custom built event!

Program Length: 2 hours minimum

Min: 10 participants | **Max:** 55 participants



Make an impact and get the most out of your event at Terranea with a variety of wellness offerings. The options are plentiful, so it's easy to choose which elements fit your program. Personalize your welcome amenities with our unique aromatherapy app and blending bar. Eliminate the stress of travel with a relaxing chair massage at registration. Jump start the day with morning activities. Enliven your attendees with One Minute Aromatherapy Revivers during coffee breaks. Plan a stretch break to increase the vitality in your meeting room. Take a break and rejuvenate your attendees with tranquil spa treatments.

SPECIALIZED GROUP WELLNESS *Enhancements*

PERSONALIZED WELCOME AMENITIES

With our interactive aromatherapy app and custom blending bar, say goodbye to generic amenities. Let your guest be guided to create the perfect blend for themselves.

LUNCH AND LEARN

Enhance your typical lunch, with a nutrition talk to help raise awareness of how to take care of yourself while on the go or on the road.

Length: 45 minutes

ONE MINUTE AROMATHERAPY REVIVERS

Perfect during coffee breaks as a mind revitalizer and neck and shoulder relaxer. A great pick-me-up after a night of celebrating.

Minimum Length: 30 minutes

STRETCH BREAKS

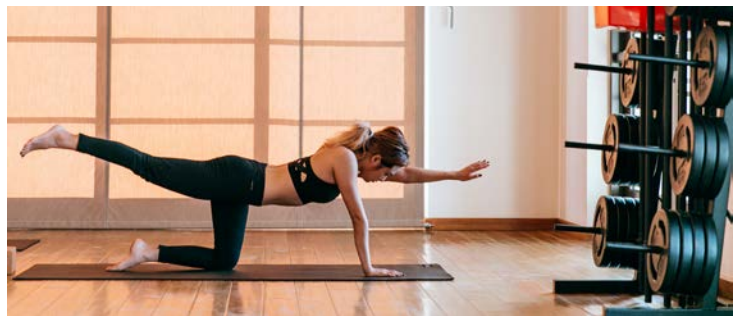
Re-energize, breathe deeply, and help refocus everyone's attention with a quick stretch break. Perfect for between presenters or just as a nice way to enliven a session. One of our Terranea fitness instructors will lead a stretch break in your meeting room.

Length: 10 minutes

BRAINSTORMING ASSISTANT

Get the most out of your brainstorming sessions, with a guided meditation to get your group "present" in the room and tapped into their most creative, "out of the box" ideas. A great way to make the most of your meeting.

Length: 10 minute sessions





Wellness OFFERINGS

The Spa at Terranea offers over 50,000 square feet of indoor and outdoor relaxation and wellness space. With 25 treatments rooms, separate men's and women's heat experiences and spa pool, it's the perfect retreat for your group.

RELAXING CLASSICAL MASSAGE

Tailored to the individual in order to relax and address muscular aches and pains to soothe the body and mind.

Length: 50 minutes

SKIN SPECIFICS FACIAL

Your skilled and caring Terranea esthetician will determine the appropriate way to effectively address the specific needs of your skin.

Length: 50 minutes

CHAIR MASSAGE OR REFLEXOLOGY

Let us bring the relaxation to your meeting room or registration desk. Keep your team focused, energized and attentive - give them a quick, revitalizing break.

Length: 60 minutes

TERRANEA THERAPEUTICS MASSAGE

A skilled therapist determines the most appropriate massage modality to address injuries, chronic aches, fluid retention and other conditions.

Length: 50 minutes

SPORTS MASSAGE

Tailored to the needs of the athlete, this specific massage addresses problematic muscles and joints, using techniques that stretch the muscles, improve flexibility and flush metabolic waste from the tissues.

Length: 50 minutes

PACIFIC BLUE MANICURE & PEDICURE

Feel your stress and worry float away, with the deeply relaxing combination of lavender and blue chamomile. Begin with a mineral replenishing salt scrub, a hydrating aloe mask and a nourishing finish, leaving your skin silky smooth.

To complete: a perfect polish finish.

Manicure Length: 45 minutes

Pedicure Length: 60 minutes

CONTACT INFO: 310.265.2718
TER-GROUPWELLNESS@TERRANEA.COM



Fitness

Have your group get the most from your event by enhancing their wellbeing with movement and specialized offerings. We can accommodate any group size from 5-105 or more, let us create the best way to keep your group happy, healthy and moving.

NATURE'S GYM

Enjoy a fantastic workout by exploring more than 100 acres of natural surroundings and get a complete workout by using your own body weight and existing elements in a fun filled energetic setting. A great way to kick off an event since you will finish with an overview of what the entire resort encompasses.

CYCLE

Accommodates up to 12 guests, but arrangements can be made to increase number of participants. Get your heart pumping while cycling overlooking the ocean in front of the movement studio. Geared toward all levels of fitness!

CUSTOM-DESIGNED CLASSES

Cycle and pilates? Core and yoga? Run, swim, bike? Let us know and we can come up with the perfect tailor made class to accommodate your group!

YOGA

Using a combination of postures, breathing exercises and other techniques to promote flexibility, build strength, and reduce stress, yoga brings the body, mind and spirit into balance. A great way to start or end the day.

2 MILE OR 5K FUN RUN / WALK

Connect with nature. Ask for a sample of the route map! This is a great group activity and is a fantastic way to familiarize guests with the resort grounds.

NUTRITION

Have a smoothie sampling offering while a nutritionist provides valuable tips for good nutrition on the go! It's a very comfortable setting with ample time for questions and answers for those interested in enhancing their overall health.

BOOT CAMP

A very popular way to jump start the day out on one of our outdoor lawns with the ocean as the backdrop. Don't let the name scare you. This camp is geared towards all levels, targeting abs, legs, and using upper body. Great large group exercise class that gets everyone pumped up for the day. Relay races can be included, getting even the mildest groups motivated to compete with each other!

TAI CHI

Tai Chi is a noncompetitive, self-paced system of gentle physical exercise and stretching, done standing. You perform a series of postures or movements in a slow, graceful manner with each move flowing into the next so that your body is in constant controlled motion.

CONTACT INFO: 310.265.2718
TER-GROUPWELLNESS@TERRANEA.COM