

BLUEBIRD

*Cady Hill*

LODGE

MEETINGS & EVENTS

2025-2026





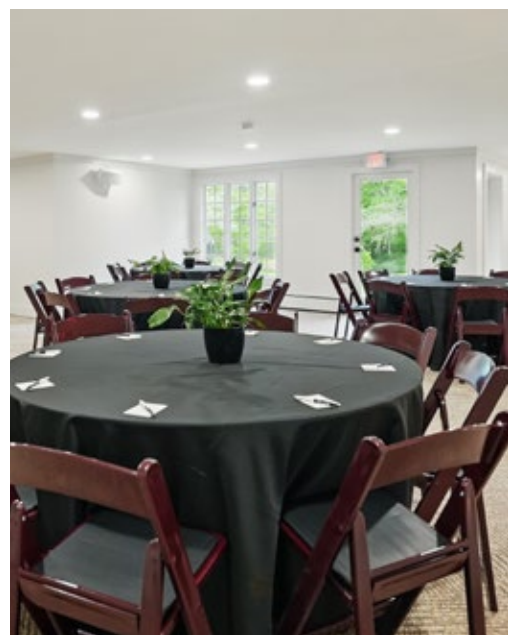
# WELCOME TO BLUEBIRD CADY HILL LODGE



At Bluebird Cady Hill Lodge, your event will be set against the pine-filled backdrop of Cady Hill Forest in the heart of Stowe. Our stylish mountain lodge-inspired space embodies the adventure-driven spirit that provides the perfect, unique venue for your intimate wedding, family reunion, special gathering, or event.

## AMENITIES

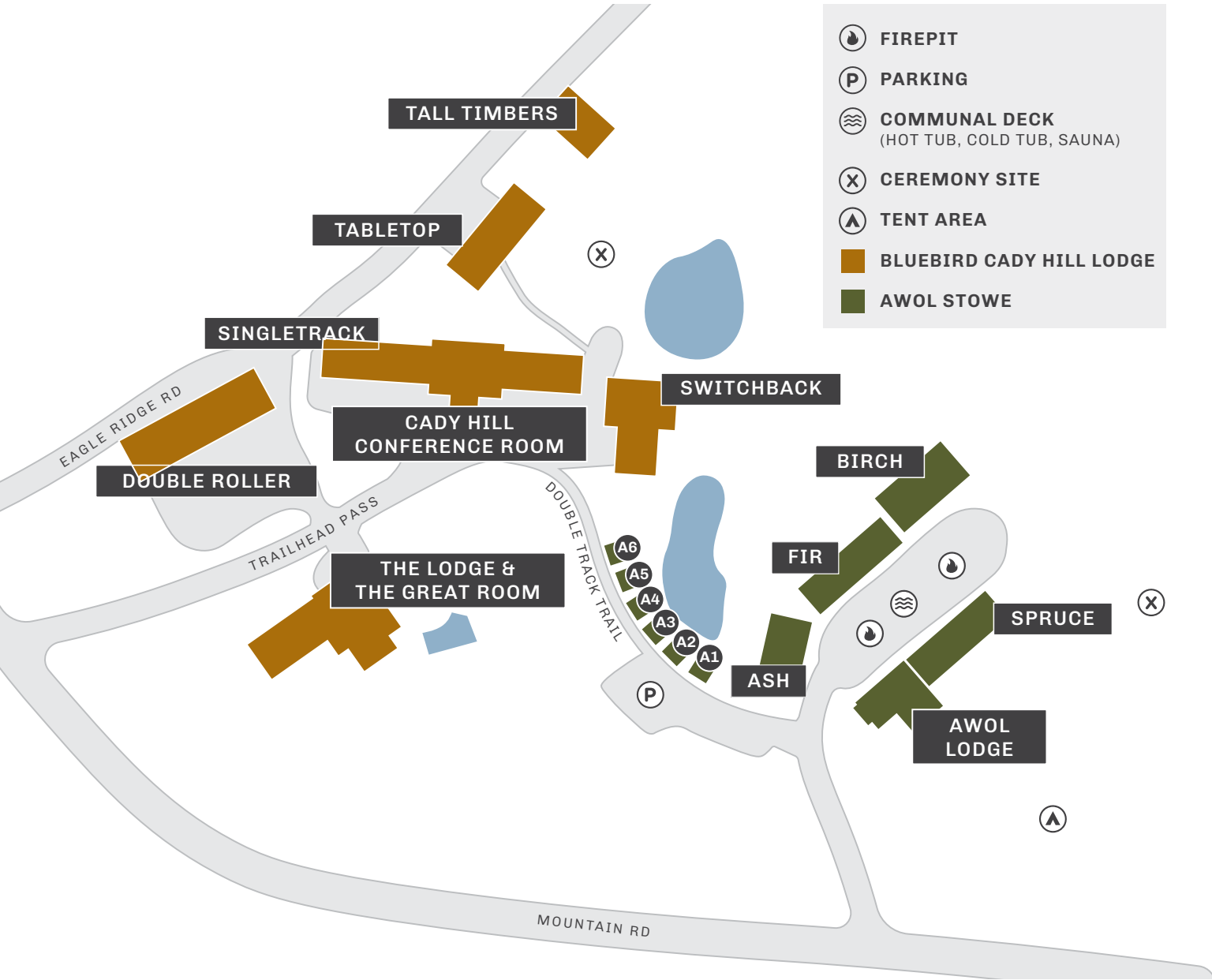
- 53 spacious rooms and a full house with mountain-inspired spaces
- Mountain views and easy access to outdoor lodge-adventure
- Three private meeting rooms available for up to 78 seated or 110 standing
- Fully outfitted fitness room and on-site sauna
- The Great Room event space can accommodate groups of up to 100 with catering service
- Indoor and seasonal outdoor pools as well as hot tub to relax and soak in
- The Great Room Bar offers cocktails and s'mores, as well as breakfast and an all-day menu
- Kid-friendly with welcome gifts, activations, and an area-friendly scavenger adventure
- Free high-speed WiFi throughout the hotel
- Dog-friendly



Questions? Want to learn more? Please contact [cadyhillevents@bluebirdhotels.com](mailto:cadyhillevents@bluebirdhotels.com)

# OUR PROPERTY

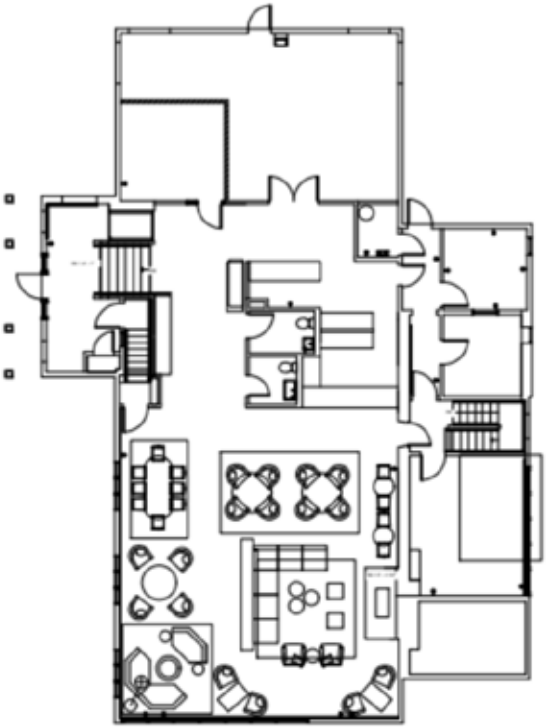
Situated on 35 acres of open meadows and pine covered hills, with trails leading directly into the expansive 3,500-acre Cady Hill Forest, Bluebird Cady Hill Lodge offers an idyllic getaway. Together with its sister property, AWOL Stowe, Bluebird Cady Hill Lodge encompasses a variety of buildings with diverse room types to perfectly suit every traveler's needs.



# CAPACITY CHART

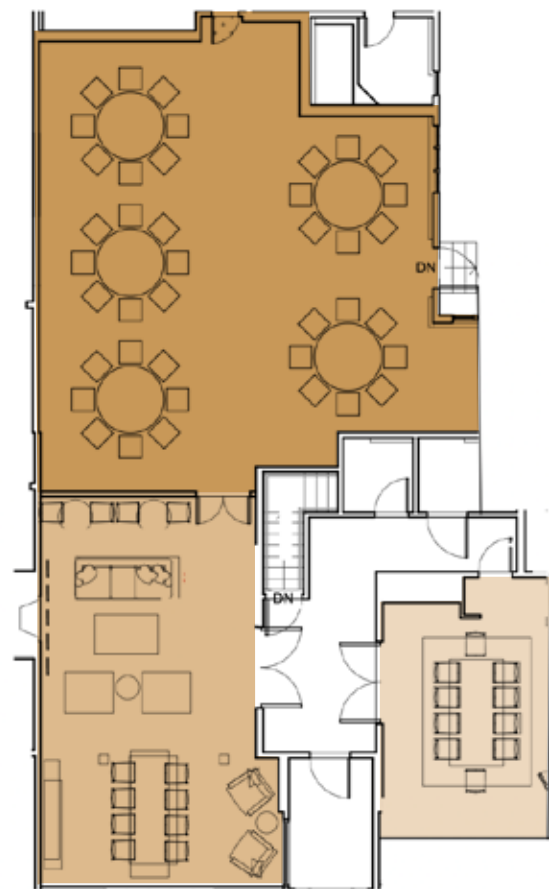
Space	Seated Capacity	Maximum Capacity
<b>Bluebird Cady Hill Lodge</b>		
The Great Room	40	100
Argyle Conference Room	52	75
Tartan Lounge	18	30
Gingham Board Room	10	10
<b>AWOL</b>		
AWOL Lodge	50	75
AWOL Ceremony Site	120	120
AWOL Tent Site	120	120

# OUR SPACES



## THE GREAT ROOM

Full of light and great for meetings. Catering available. **Capacity:** Seated 40, maximum 100 people



Split our meeting rooms into smaller spaces, or combine for larger events with multiple seating areas.

### ARGYLE CONFERENCE ROOM

Perfect for mid-sized gatherings, with multiple table configurations available.

**Capacity:** 52 seated, maximum 75

### TARTAN LOUNGE

Perfect for smaller meetings and cocktail parties.

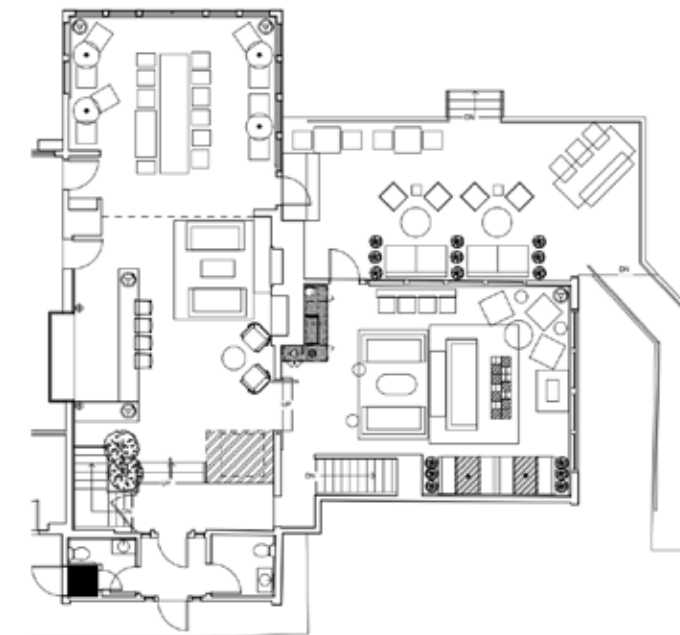
**Capacity:** 18 seated, maximum 30

### GINGHAM BOARD ROOM

Perfect for intimate meetings in a private space.

**Capacity:** 10 seated maximum

- Argyle Conference Room
- Tartan Lounge
- Gingham Board Room



### AWOL LODGE

A serene and unforgettable space for intimate gatherings. Available exclusively as part of an AWOL Stowe complete property buyout.

**Capacity:** up to 50 guests



## THE GROUNDS AT AWOL

AWOL's extensive grounds offer endless spaces for coming together. In addition to an outdoor ceremony site and tent area, we have three communal fire pits and a Nordic spa deck featuring a cedar hot tub, cold plunge, and a barrel sauna. Our outdoor spaces are designed to create immersive natural experiences.

## AWOL CEREMONY SITE

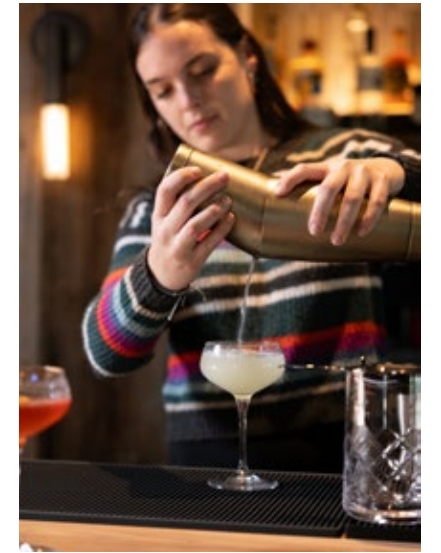
Imagine your dream ceremony in AWOL Stowe's breathtaking outdoor space. Nestled just beyond the forest's edge, this private setting creates an unforgettable experience for nature lovers.

## AWOL TENT SITE

The side lawn, nestled amid a serene, wooded backdrop and encircled by trees, is a lush, green expanse perfect for a wedding tent. Tent needs vary by group size. Vermont Tent Company is our approved and preferred vendor for these rentals—their rentals include tables, chairs, linens, & dishware.

**Capacity:** 150 guests

## EAT & DRINK



## FOOD OPTIONS

We work in close partnership with a series of local professionals to provide full catering services. We are also able to offer our AWOL menu à la carte for groups of up to 50 people, and will be happy to provide you with a list of our preferred vendors.

We do offer limited breakfast options and add on packages for larger groups:

**Bagel Bar** | \$18 per person

Includes local tea and coffee options, juices, bagels, spreads and toppings for bagels (lox, capers, cream cheese, jams, etc.), fresh fruit, and local yogurt.

**Breakfast Sandwich Bar** | \$16 per person

Includes local tea and coffee options, juices, choice of breakfast sandwich options, local yogurt and toppings (berries, nuts, chocolate, bananas, maple syrup, brown sugar, etc).

**S'mores Board** | \$9 per person

**Local Charcuterie** | \$30 per person

Includes 3 local meats, 3 local cheese selection, crackers, bread, rotating accompaniments (fruit, spreads, nuts, vegetables, pickles)

**Hummus Board** | \$12 per person

Includes fresh foccaccia and sliced vegetables

## CASH BAR

We offer a cash bar of our regular bar menu for groups of up to 60 people.

## HOST TAB (CONSUMPTION BAR)

We offer a host tab of our regular bar menu for up to 60 people. For groups of more than 60, there will be a house selection of beer, wine, and basic cocktails from our available selections. Host tabs can be offered up to a maximum of 150 people. We require an open bar package selection for any groups exceeding 150 people. We require a minimum spend of \$1,200 for all host tabs.

### SAMPLE DRINK SELECTIONS

#### Beer | \$5–8

Rotating selections including domestic, imported, and local draft and cans; inquire for a sample

#### list. **Select Spirits** | \$12–14

Tito's Vodka, Bombay Gin, El Charo Tequila, Bacardi Superior Rum, Bulleit Bourbon, Dewar's White Label Scotch, Bailey's Irish Cream

#### **Drink Like a Local Spirits** | \$14–16

Smugglers Notch Vodka, Wild Hart Gin, Rum 44, Azteca Azul Tequila, Rectified Bourbon, Rittenhouse Rye, McClelland's Scotch, Perc Coffee Liqueur, Smugglers' Notch Distillery Maple Cream, Aperol, Campari, Disaronno Amaretto, etc.

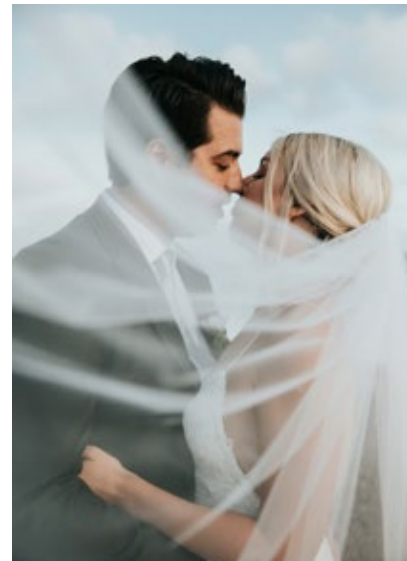
#### Wine | \$11–17

Rotating natural and organic selections; inquire for a sample list.

#### **Premium Spirits** | \$14–18

Grey Goose Vodka, Barr Hill Gin, Barr Hill Tom Cat Reserve, Mad River First Run Rum, Patron or Casamigos Tequila, Smith & Cross Jamaican Rum, Whistlepig Piggyback Rye, Mad River Bourbon, Laphroaig, Perc Coffee Liqueur, Smugglers' Notch Distillery Maple Cream, Aperol, Campari, Disaronno Amaretto, etc.

*Host tab and cash bar events are a minimum of two hours long. Beverage options are subject to change based on availability.*



## OPEN BAR PACKAGES

### PREMIUM OPEN BAR

**\$85 per person** (additional hours available for \$12 per person).

Includes two specialty cocktails.

### PREMIUM OPEN BAR - BEER & WINE ONLY

**\$70 per person** (additional hours available for \$12 per person).

Choose four beers, one cider, and five wines from our available selections.

#### Sample Beer & Wine:

*\*\*Inquire for sample list\*\**

#### Sample Spirits:

Barr Hill Vodka, Barr Hill Gin, Barr Hill Tom Cat Reserve, Mad River First Run Rum, Patron or Casamigos Tequila, Appleton Jamaican Rum, Whistlepig Piggyback Rye, Mad River Bourbon, Glenlivet, Laphroaig, Perc Coffee Liqueur, Smugglers' Notch Distillery Maple Cream, Aperol, Campari, Disaronno Amaretto, etc

#### Non-Alcoholic/Mixers:

Standard sodas, fresh pressed juices, house mixers and syrups, one specialty mocktail, coffee and tea

### DRINK LIKE A LOCAL OPEN BAR

**\$75 per person** (additional hours available for \$10 per person).

Includes two specialty cocktails.

### DRINK LIKE A LOCAL OPEN BAR - BEER & WINE ONLY

**\$60 per person** (additional hours available for \$10 per person).

#### Sample Beer & Wine:

Lawson's Lil Sip, Von Trapp Rotating, Switchback Ale, Zero Gravity McLighty's, Stowe Cider Rotating, Gulp/Hablo Español Red, Vorspannhof Mayr Gruner, Rotating Rosé, Archer Roose Bubbly White

#### Sample Spirits List:

Green Mountain Vodka, Mythic Gin, Rum 44, El Charro Tequila, Barred Owl Bourbon, Whistle Pig Piggyback, McClelland's Scotch, Perc Coffee Liqueur, Smugglers' Notch Distillery Maple Cream, Aperol, Campari, Disaronno Amaretto, etc.

#### Non-Alcoholic/Mixer Options:

Standard sodas, fresh pressed juices, house mixers and syrups, one specialty mocktail, coffee and tea

*All packages are for 5 hours of service, pricing for additional hours not to exceed 7 total hours of service. Beverage options are subject to change based on availability.*

### ADD ONS

Champagne Toast	+ \$6 per person
Domestic Beer (outside of selection)	+ <i>subject to availability</i>
Craft/Local Beer (outside of selection)	+ <i>subject to availability</i>
Specialty Wine (outside of selection)	+ <i>subject to availability</i>
Additional Specialty Cocktail	+ \$8 per person
Wine Pour	+ \$5 per person

BLUEBIRD

*Cady Hill*

LODGE

511 Mountain Road,  
Stowe, VT 05672

[bluebirdcadyhill.com](http://bluebirdcadyhill.com)

[cadyhillevents@bluebirdhotels.com](mailto:cadyhillevents@bluebirdhotels.com)

802-276-8200