



## Common Goods

What was once the retail shop for 1440 Multiversity has been transformed into a chef’s library and gathering space that can accommodate small meetings and a variety of learning workshops. Connected to the Sanctuary and located in the heart of campus across the patio from Common Grounds Cafe, this room features built-in counters and bookshelves lined with culinary inspiration, a window alcove overlooking Joanie’s Garden, two access doors on either side of the room, and rubber flooring for comfort. Restrooms are conveniently located around the corner on the exterior of the building.

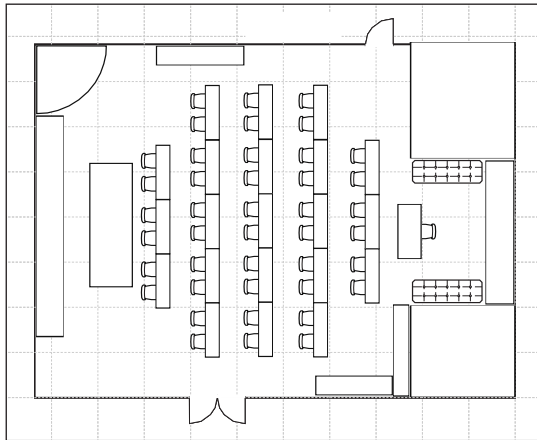
## Dimensions & Details

Dimensions (L x W)	Square Feet	Theatre	Classroom	Crescent Rounds	Yoga	Rounds	Circle	U-Shape
31 x 35	1,085	112	42	42	22	72	50	22-35



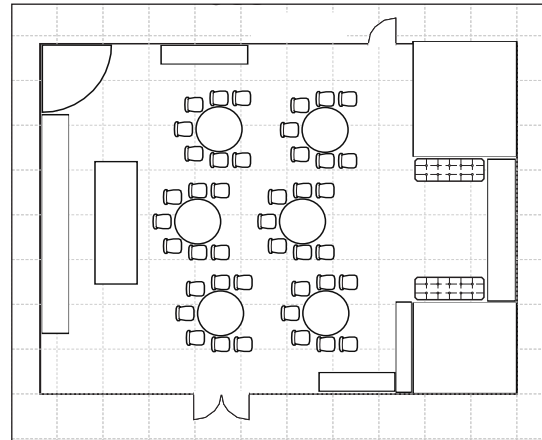
## Additional Features

A variation of tables, chairs and props is available. Our production staff will work with your group to accommodate all setup needs. Please inquire about our full list of AV capabilities and technical support staff. *Please note that above rendering is not to scale.*



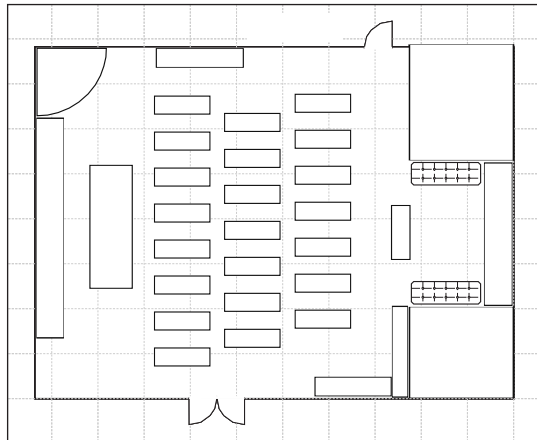
**Common Goods | Classroom**

42 Seats, 21 Tables



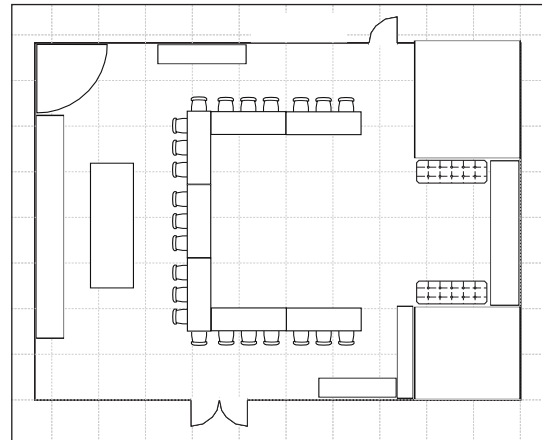
**Common Goods | Crescent Rounds**

42 Seats, 6 Tables (7 Seats per Table)



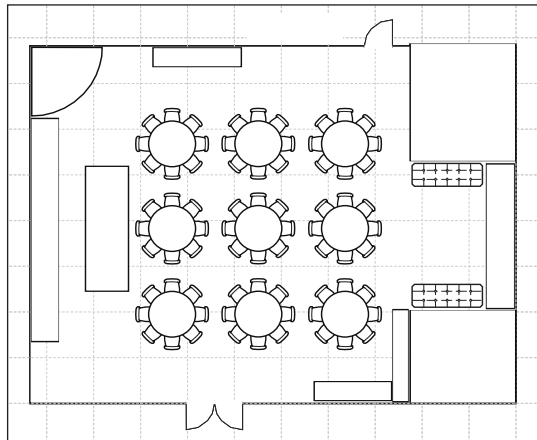
**Common Goods | Yoga**

22 Mats, 1 Teacher



**Common Goods | U-Shape**

23 Seats, 7 Tables (8-foot)



**Common Goods | Rounds**

72 Seats, 9 Tables (8 Seats per Table)

**Please Note:** Diagrams are for illustrative purposes only. Standard sets include theatre only; in most cases custom sets, tables and linens are an additional charge. Please refer to the Meeting Space Design Inventory list for in-house items available and contact the 1440 Program Design and Experience Teams for more information.

